



COMPANY PROFILE

Reg No: 2025/50163/07

Tax No: 9185551281

Address: 24 Flamink Street, Alrode

Tel: +27 71 664 4033, +27 76 894 2068, +27 62 517 6026

Email: info@petromininggroup.co.za,
hillary@petromininggroup.co.za,
cele@petromininggroup.co.za

www.petromininggroup.co.za

TABLE OF CONTENT



1. Company Overview	Page 3
2. Vision	Page 3
3. Mission	Page 3
4. Core Values	Page 4
5. Key Services	Page 5-6
6. Our Clients	Page 6
7. Compliance and Safety Assurance	Page 7
8. Health, Safety and Environment (HSE)	Page 7
9. Black Economic Empowerment	Page 8
10. Equipment and Technology	Page 8
11. Project Experience	Page 8
12. Contact Details	Page 9
13. Registration and Legal	Page 9
14. Conclusion	Page 9

1. COMPANY OVERVIEW

Petro Mining Group (Pty) Ltd is a leading South African engineering and petroleum infrastructure company that specializes in Pump & Tank Installation, New Fuel Station, Servicing Fuel Stations, Commercial Energy systems, Environmental Compliance, and Civil Construction. With decades of combined industry experience, we provide turnkey design, installation, maintenance, and testing services to oil companies, commercial fuel depots, mining operations, and industrial clients across Southern Africa.

Our reputation is built on precision, compliance, safety, and a deep commitment to sustainable development in the energy and civil sectors. From underground fuel infrastructure to complex environmental compliance solutions, Petro Mining Group is trusted by industry leaders to deliver world-class results on time and within budget.

2. VISION

To become the most trusted and innovative infrastructure partner in Africa's fuel, energy, and environmental engineering sectors.

3. MISSION

To deliver integrated infrastructure and engineering services with a focus on safety, quality, environmental sustainability, and long-term value for clients and communities.



4. CORE VALUES

- **Excellence** – We pursue perfection in execution and client satisfaction.
 - **Safety First** – Zero tolerance for unsafe practices; we prioritize human life and the environment.
 - **Integrity** – Ethical, transparent, and professional conduct.
 - **Innovation** – Leveraging modern technologies to deliver advanced solutions.
 - **Sustainability** – Minimizing environmental impact through responsible practices.
 - **Collaboration** – We build partnerships that last through mutual respect and trust.
-

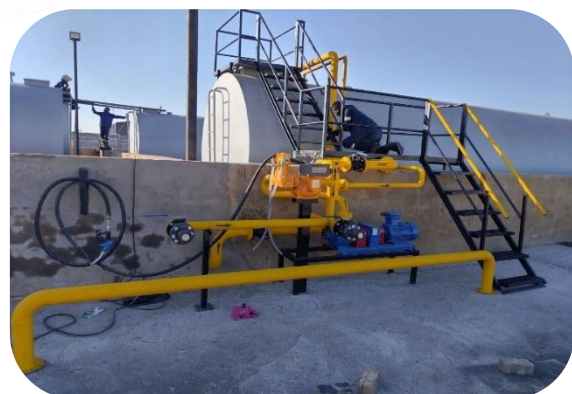


5. KEY SERVICES

Petro Mining Group offers a wide array of services underpinned by technical expertise, industry compliance, and environmental responsibility:

A. Fuel Infrastructure Engineering

- Turnkey Installation of Aboveground Fuel & Liquid Storage Tanks
- Turnkey Pump and Tank Installation & Commissioning
- Precision Replacement of Underground Pipeline Systems
- Certified Electrical Installations, Repairs & Compliance for Commercial Sites
- Tank Cleaning & Fuel Filtration Service
- Comprehensive Tank Refurbishment, Cleaning & Fuel Filtration
- Safe Decommissioning & Removal of Underground Storage Tanks (USTs)
- Preventative Maintenance & Unblocking of Fuel Tank Vent Systems
- Overfill Protection Installation Service
- Non-Destructive Vacusonic Testing for Tanks & Pipelines



B. Civil & Structural Works

- **Comprehensive Civil Engineering & Structural Works for Fuel Retail Sites**
- **Precision Casting of Forecourt Concrete Slabs & Hardstands**
- **Paving Installation Service**
- **General Building Maintenance Service**
- **Forecourt General Maintenance Service**

C. Electrical & Lighting

- **LED Canopy Lighting Installation & Electrical Compliance**
- **Engineering Professional Service Offering**

D. Environmental Services

- **Environmental Compliance Installation & Decommissioning of Oil Separators**
- **Safe Extraction & Environmental Disposal of Manhole Water**
- **Non-Invasive Underground Scanning Using Terra Scan & GPR Technologies**

E. Support Systems

- **Industrial Compressed Air Systems & Generator Support Solutions**
-

6. OUR CLIENTS



We serve a diverse client base that includes:

- Major oil companies
 - Retail fuel stations
 - Mining operations
 - Industrial and manufacturing facilities
 - Government infrastructure departments
 - Environmental management firms
-



7. COMPLIANCE & QUALITY ASSURANCE

Petro Mining Group operates in full compliance with:

- **SANS, ISO, and NRCS** engineering standards
- **South African National Environmental Management Act (NEMA)**
- **Occupational Health and Safety Act**
- **Department of Mineral Resources and Energy (DMRE) Regulations**

Our internal quality assurance system ensures rigorous inspections, documentation, and third-party testing where required, giving clients peace of mind that every project is fully certified and meets industry standards.

8. HEALTH, SAFETY & ENVIRONMENT (HSE)

We embed safety into every layer of our work. Petro Mining Group's HSE policy enforces:

- Full site risk assessments before project commencement
- PPE compliance for all workers and subcontractors
- Environmental protection measures to reduce ground contamination and water pollution
- Emergency response preparedness and first aid training
- Waste management and responsible disposal of hazardous materials

9. BLACK ECONOMIC EMPOWERMENT (B-BBEE)



We are a **Level 1 B-BBEE Contributor** and are deeply invested in transforming the South African economy through:

- Empowerment of black-owned suppliers and subcontractors
 - Employment equity and skills development
 - Community upliftment initiatives near our project sites
-

10. EQUIPMENT & TECHNOLOGY



We deploy advanced tools and technology for efficient and precise operations, including:

- **Terra Scan & GPR Systems** for underground scanning
 - **Vacusonic Equipment** for non-destructive tank testing
 - **Modern filtration and cleaning systems** for fuel quality control
 - **Heavy-duty construction and casting machinery** for civil works
-

11. PROJECT EXPERIENCE



Petro Mining Group has delivered successful projects across multiple provinces for fuel station brands, mining clients, and corporate campuses. Our portfolio includes:

- Fuel depot refurbishments in Mpumalanga and Limpopo
 - LED canopy upgrades for national fuel station chains
 - Underground tank removals and soil remediation
 - Full EPC (Engineering, Procurement & Construction) contracts for new fuel retail sites
-

12. CONTACT DETAILS

Head Office

Address: 24 Flamink Street, Alrode

Phone: +27 71664 4033, +27 76 894 2098, +27 62 517 6026

Email: info@petromininggroup.co.za, hillary@petromininggroup.co.za,
cele@petromininggroup.co.za

Website: www.petromininggroup.co.za

13. REGISTRATION & LEGAL

- **Company Registration No:** 2025/501631/07
- **Tax Number:** 9185551281
- **Insurance & Warranties:** Public liability and project warranties available on all services



14. CONCLUSION

Petro Mining Group is more than a contractor — we are a dependable partner in fuel infrastructure development and environmental safety. Our multidisciplinary team, innovative technologies, and uncompromising commitment to compliance make us the ideal choice for clients seeking reliability, safety, and lasting value.

Whether it's a new retail forecourt, a decommissioning project, or environmental testing, Petro Mining Group delivers excellence from the ground up.